



VISUAL HERITAGE, Vienna 2018

AN EVIDENCE OF ARCHAEOLOGICAL ACTIVITIES IN SLOVAKIA

Alena Bistáková - Elena Blažová - Peter Bednár - Matej Ruttkay

(alena.bistakova@savba.sk, elena.blazova@savba.sk, peter.bednar@savba.sk, matej.ruttkay@savba.sk)

Institute of Archaeology of the Slovak Academy of Sciences in Nitra

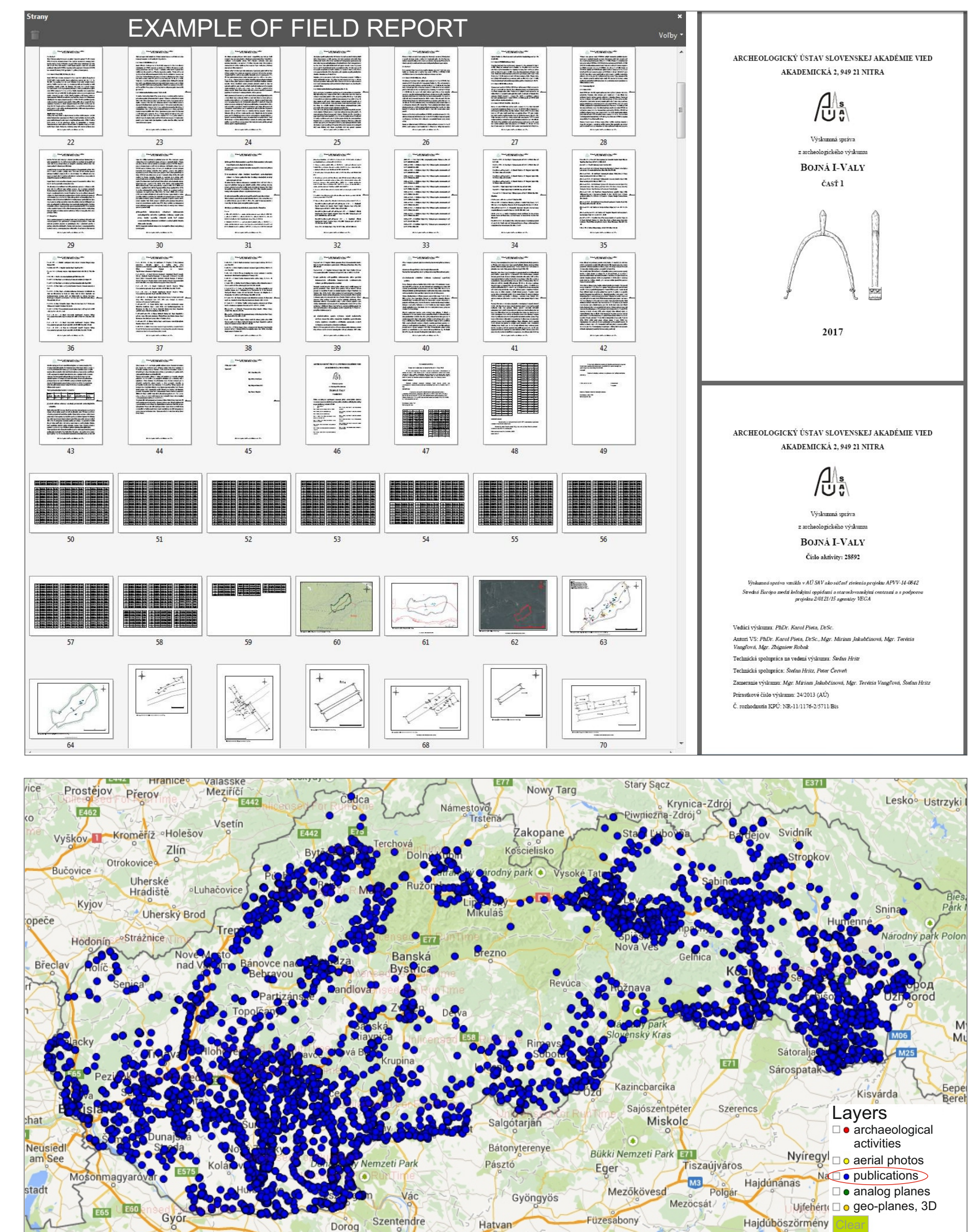
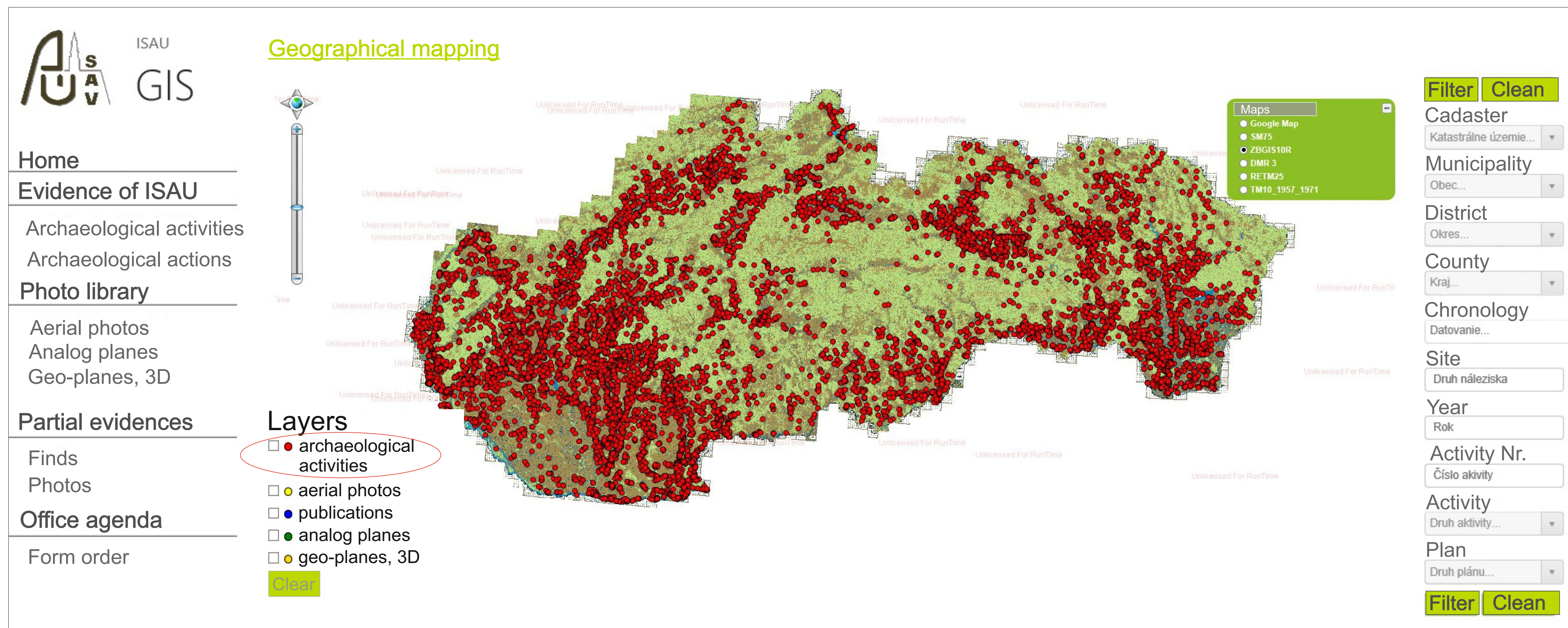
In 1939, the Institute at the Slovak Academy of Sciences began developing central register of archaeological activities in Slovakia. Because these databases contained so much information, it was necessary to prepare a central, mutually interrelated geoinformational structure. Thus, we developed an application that allows simple and fast access to the information. System integrates various types of databases and digital supplementary materials. Application permits online editing of individual entries within a predefined personal manager interface, provides opportunities for scientific research, and allows analyses using multiple search criteria. The aim of this project was to develop an information and communication centre that includes a database of archaeological and relevant spatial data from Slovakia. The first - trial -version of the geoinformational system is currently available on the Geoportal.sk website.

PRIMARY DATABASE

Archaeological activity	Date	Location	Type	Status
1940	1940	Starý Svätý Jur	Starý Svätý Jur	Starý Svätý Jur
1941	1941	Starý Svätý Jur	Starý Svätý Jur	Starý Svätý Jur
1942	1942	Starý Svätý Jur	Starý Svätý Jur	Starý Svätý Jur
1943	1943	Starý Svätý Jur	Starý Svätý Jur	Starý Svätý Jur
1944	1944	Starý Svätý Jur	Starý Svätý Jur	Starý Svätý Jur
1945	1945	Starý Svätý Jur	Starý Svätý Jur	Starý Svätý Jur
1946	1946	Starý Svätý Jur	Starý Svätý Jur	Starý Svätý Jur
1947	1947	Starý Svätý Jur	Starý Svätý Jur	Starý Svätý Jur
1948	1948	Starý Svätý Jur	Starý Svätý Jur	Starý Svätý Jur
1949	1949	Starý Svätý Jur	Starý Svätý Jur	Starý Svätý Jur
1950	1950	Starý Svätý Jur	Starý Svätý Jur	Starý Svätý Jur

On the present, database includes **29 700 archaeological activities** and 25 200 digitized field reports.

GEOINFORMATIONAL STRUCTURE



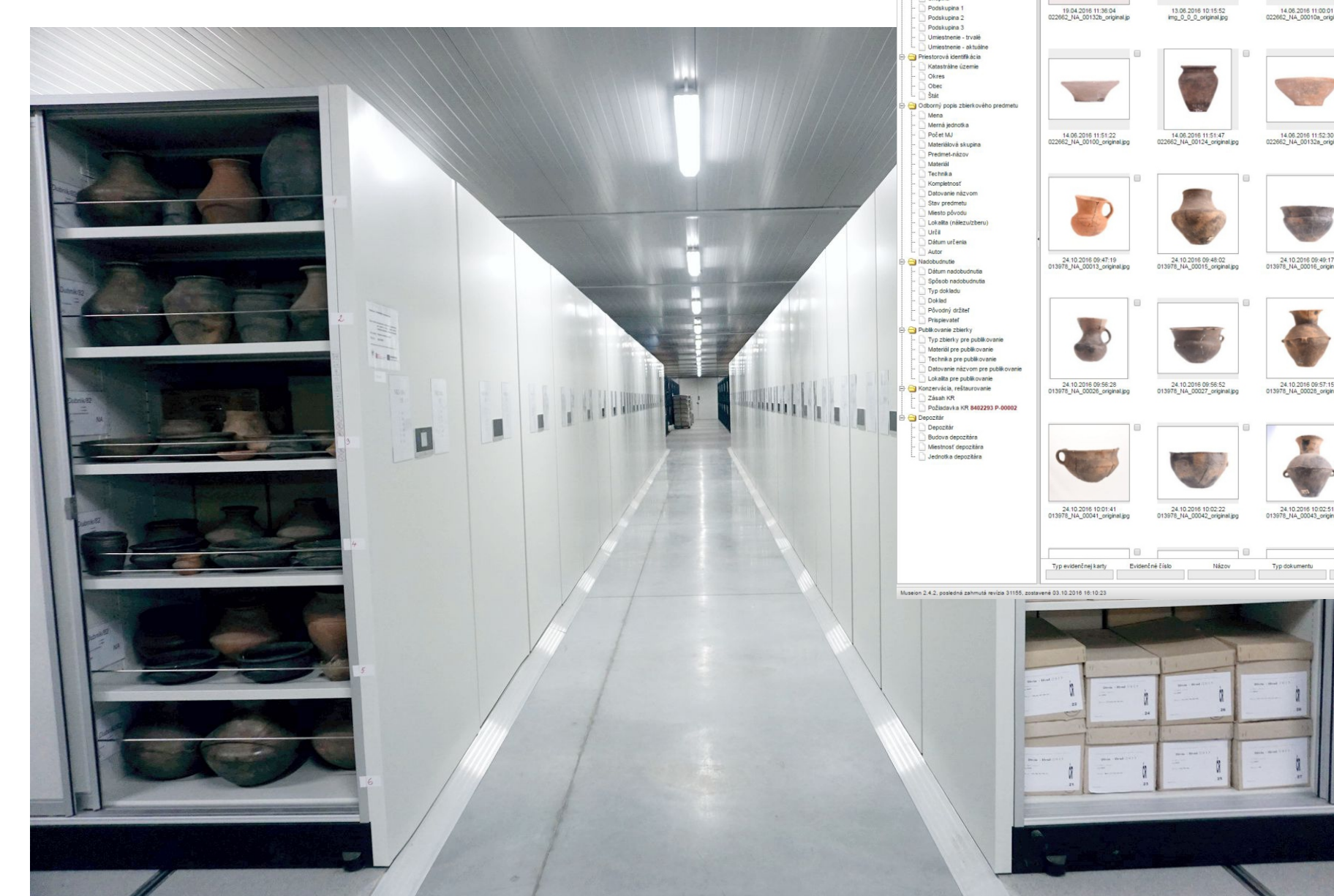
ARCHIVES



View of the Institute of Archaeology database of aerial photos

Database of digitized photos of archaeological artefacts and field activities

The research depositories record hundreds of thousands of finds divided into databases of vessels, small finds, pottery, anthropological material, archaeobotanical samples, animal bones, etc.



320 000 digitized finds

